



Submittal Data Sheet

AY-XPC18CU
18,000 BTU Wall Mount Indoor Unit

| | |
|------------|-------|
| Job Name: | |
| Reference: | Date: |



Sharp Air app available in Apple® App Store and Google® Play Store.

Product Features

A2L refrigerant R32
50ft long "Coanda Airflow"
"Multi Space" air circulation
Built-in Wi-Fi Adapter

| CAPACITIES | | | |
|------------|----------------|-------|--------|
| Cooling | Rated Capacity | BTU/H | 18,000 |
| Heating | Rated Capacity | BTU/H | 21,600 |

NOTE: Test conditions are based on AHRI 210/240.

Cooling at 95°F Indoor: 80°F (26.7°C) DB / 67°F (19.4°C) WB
Heating at 47°F Indoor: 70°F (21.1°C) DB / 60°F (15.6°C) WB

| REFRIGERANT | |
|-------------|-----|
| Type | R32 |

| ELECTRICAL | | |
|-------------------------------------|------|----------------|
| Voltage, Phase, Frequency | | 208/230, 1, 60 |
| Guaranteed Voltage Range | V AC | 187 - 253 |
| Voltage: Indoor - Outdoor, S1-S2 | V AC | 208/230 |
| Voltage: Indoor - Outdoor, S2-S3 | V DC | 24 |
| Short-circuit Current Rating (SCCR) | kA | 5.0 |
| MCA | A | 0.4 |

| PIPING | | |
|--------------------------------|----------|------------|
| Gas Pipe Size O.D. (Flared) | In. (mm) | 3/8 (9.52) |
| Liquid Pipe Size O.D. (Flared) | In. (mm) | 1/4 (6.35) |

| FAN and SOUND | | |
|--------------------------------|-------|-----------------------------|
| Fan | | Cross Flow Fan |
| Fan Motor Full Load Amperage | A | 0.4 |
| Fan Motor Output | W | 30 |
| Airflow Rate at Cooling, Dry | CFM | 636 / 597 / 480 / 328 / 251 |
| Airflow Rate at Cooling, Wet | CFM | 553 / 519 / 417 / 285 / 218 |
| Airflow Rate at Heating, Dry | CFM | 752 / 713 / 558 / 403 / 290 |
| Sound Pressure Level (Cooling) | dB(A) | 45 / 43 / 38 / 31 / 28 |
| Sound Pressure Level (Heating) | dB(A) | 49 / 47 / 41 / 31 / 25 |

| DIMENSION and WEIGHT | | Unit | Package |
|----------------------|---------------------|--------------------------------------|---------------------------------------|
| Dimensions | W x H x D: In. (mm) | 41.4 x 12.4 x 9.8 (1052 x 316 x 249) | 43.8 x 12.7 x 15.3 (1113 x 323 x 389) |
| Weight | lbs. (kg) | 31 (14) | 35 (16) |

| OPERATING TEMPERATURE | | Max. | Min. |
|-----------------------|---------|-----------|-----------|
| Cooling | °F (°C) | 90 (32.2) | 70 (21.1) |
| Heating | °F (°C) | 81 (27.2) | - |

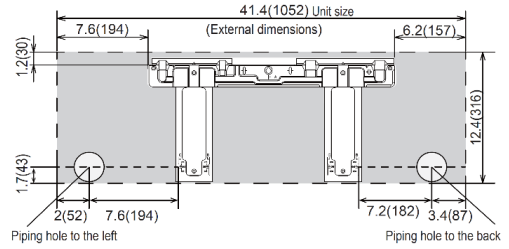
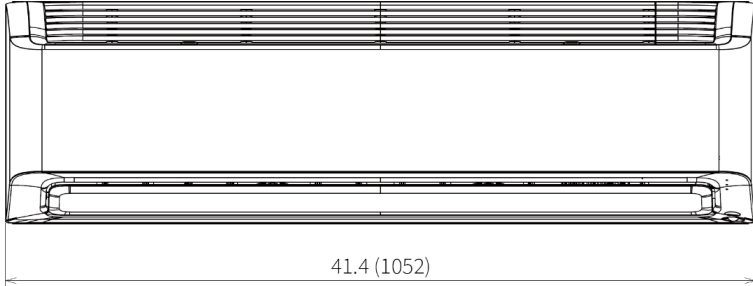
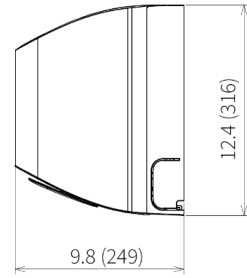
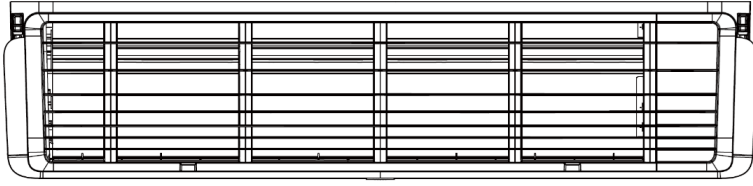
| OTHERS | | Indoor Unit |
|-----------------------|--|---------------|
| External Finish Color | | Premium White |

NOTE: Test conditions are based on AHRI 210/240.

DIMENSIONS: AY-XPC18CU

Indoor Unit

Length unit: inch (mm)



SHARP

Sharp Corporation, Japan
2-1-25, Kyutaromachi, Chuo-ku, Osaka

